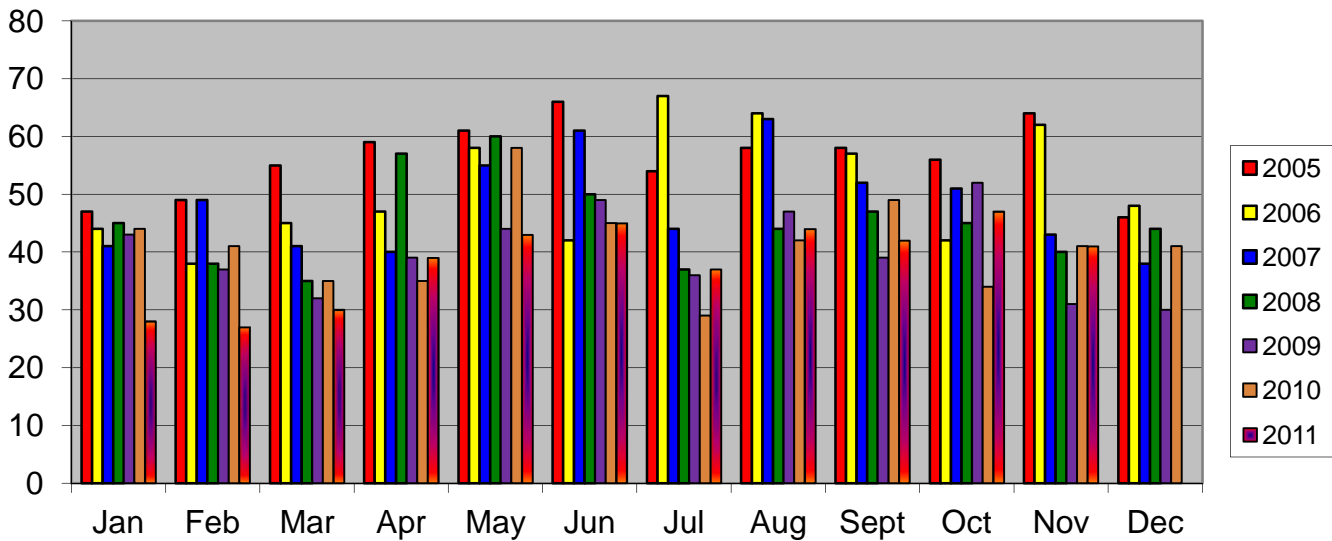


# Decatur Police Department Personal Injury Accidents

| MONTH         | 2005 PI Accidents | 2006 PI Accidents | 2007 PI Accidents | 2008 PI Accidents | 2009 PI Accidents | 2010 PI Accidents | 2011 PI Accidents |
|---------------|-------------------|-------------------|-------------------|-------------------|-------------------|-------------------|-------------------|
| Jan           | 47                | 44                | 41                | 45                | 43                | 44                | 28                |
| Feb           | 49                | 38                | 49                | 38                | 37                | 41                | 27                |
| Mar           | 55                | 45                | 41                | 35                | 32                | 35                | 30                |
| Apr           | 59                | 47                | 40                | 57                | 39                | 35                | 39                |
| May           | 61                | 58                | 55                | 60                | 44                | 58                | 43                |
| Jun           | 66                | 42                | 61                | 50                | 49                | 45                | 45                |
| Jul           | 54                | 67                | 44                | 37                | 36                | 29                | 37                |
| Aug           | 58                | 64                | 63                | 44                | 47                | 42                | 44                |
| Sept          | 58                | 57                | 52                | 47                | 39                | 49                | 42                |
| Oct           | 56                | 42                | 51                | 45                | 52                | 34                | 47                |
| Nov           | 64                | 62                | 43                | 40                | 31                | 41                | 41                |
| Dec           | 46                | 48                | 38                | 44                | 30                | 41                |                   |
| <b>Totals</b> | <b>673</b>        | <b>614</b>        | <b>578</b>        | <b>542</b>        | <b>479</b>        | <b>494</b>        | <b>423</b>        |

### Personal Injury Traffic Accidents



**One Fatal Accident in November 2011**  
**Seven (7) Fatal Accidents in 2011**